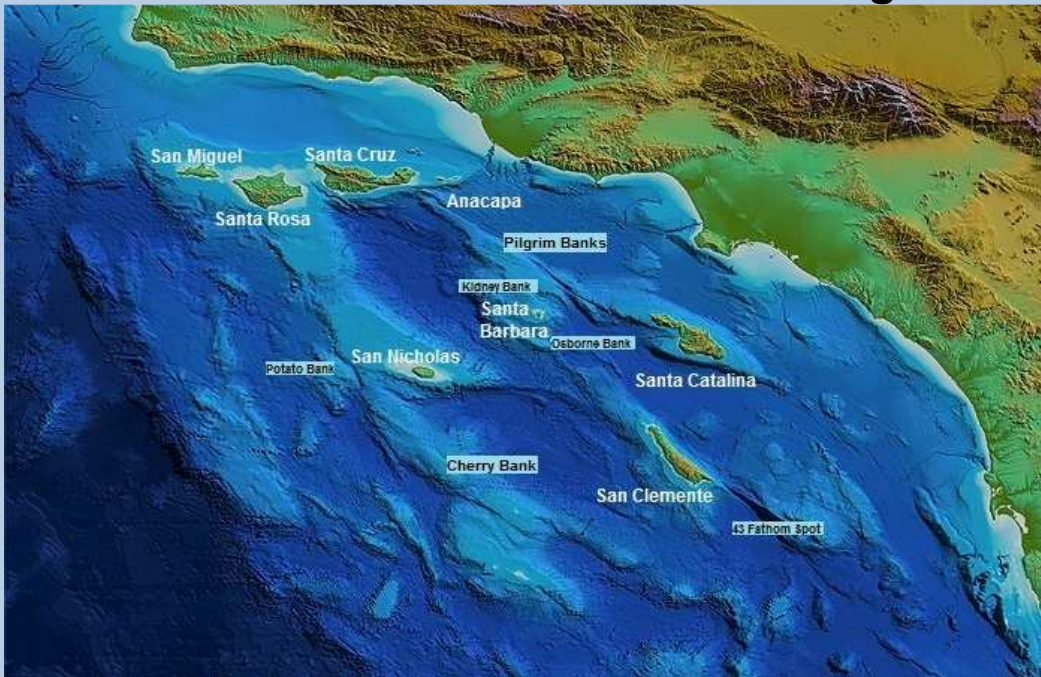


# Tuna & Offshore Fishing

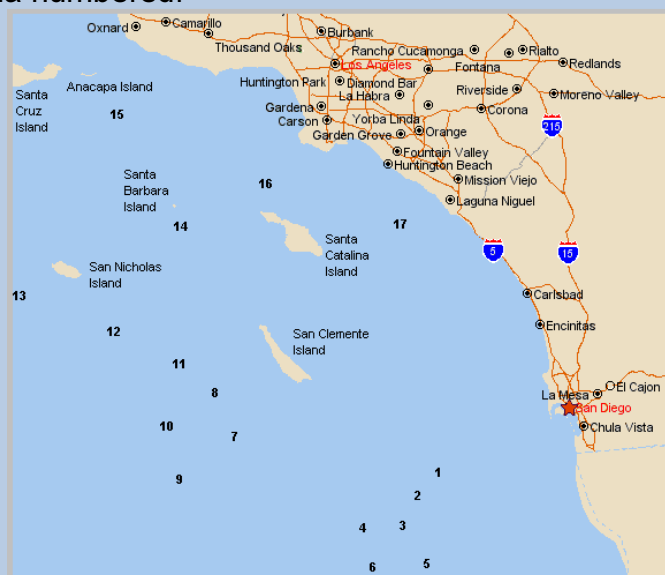
Tuna and offshore fishing refers to the taking of seasonal migratory game fish that frequent Southern California. It also includes pelagic shark fishing. Some species are regular visitors to Southern California while others are relatively rare and only arrive in years when water conditions are suitable. Some of the most challenging and exciting fishing available in California, includes fishing for tuna and other offshore species.

While these species are often denizens of blue water, that is to say, very deep water areas, the most productive offshore spots are often over banks, or subsea mountain ranges. In these areas, upwellings bring rich, nutrient laden water to the surface feeding algae blooms attracting microscopic animals, which, in turn attract huge schools of small bait fish. Naturally, wherever there is an abundance of prey, predators aren't far behind.

## Offshore SoCal with Islands and submerged banks



Like on the shore, offshore are many mountains (submerged) that form the structure for upwellings that attract sea life, including the bulk of the offshore species. Here are the major fishing banks in Southern California numbered.



## Tuna and Offshore Fishing Spots with GPS Coordinates

The following table shows the approximate center of the main offshore fishing banks, both in US and in Mexican waters. They're fairly large, some covering dozens of square miles, so locations are not as specific as, for instance, a sunken ship:

No.	Name	Country	Coordinates
1	Thirty Mile Bank	Mexico	33D 23'N. x 117D 47'W
2	Forty Mile Bank	Mexico	33D 39'N. x 117D 58'W
3	Butterfly Bank	Mexico	32D 22'N. x 118D 17'W
4	Boomerang Bank	Mexico	32D 23'N. x 118D 28'W
5	Sixty Mile Bank	Mexico	32D 05'N. x 118D 15'W
6	Mushroom Bank	Mexico	32D 05'N. x 118D 29'W
7	Cortez Bank	USA	32D 27'N. x 119D 07'W
8	Tanner Bank	USA	32D 42'N. x 119D 07'W
9	Northeast Bank	Mexico	32D 20'N. x 119D 38'W
10	Garret Bank	USA	32D 40'N. x 119D 35'W
11	Cherry Bank	USA	32D 52'N. x 119D 24'W
12	107 Bank	USA	33D 03'N. x 119D 36'W
13	Potato Bank	USA	33D 15'N. x 119D 50'W
14	Osborn Bank	USA	33D 21'N. x 119D 02'W
15	Pilgrim Bank	USA	33D 44'N. x 119D 10'W
16	The 209	USA	33D 35'N. x 118D 36'W
17	14 Mile Bank (Lasuen Knoll)	USA	33D 24'N. x 118D 00'W

**IMPORTANT NOTE!** The GPS coordinates indicated here are approximate and for informational purposes only.